

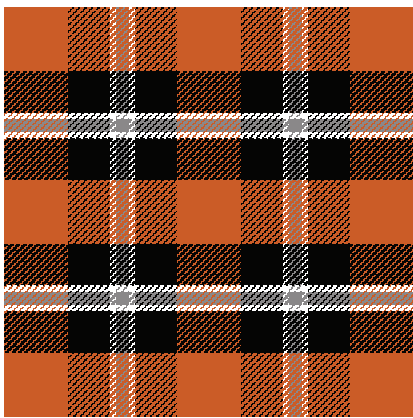
Oklahoma Tartans

An article in the Tulsa World about the design of a tartan for Oklahoma State University and a desire to find the official sett led me to a website, The Scottish Register of Tartans, www.tartanregister.gov.uk, which is now the official recorder of existing tartans and the registrar for new tartan setts (the color and number of threads that make up the warp and weft stripes of a plaid). Below are the setts from the Scottish Register of Tartans for three tartans related to Oklahoma: the new OSU tartan, and two district tartans (which anyone affiliated with the area is eligible to wear) the Tulsa tartan and the Oklahoma tartan.

Reading Tartan Setts

All tartans are woven as 2/2 twill, usually with the same weft color sequence as in the warp, so a tartan sett is basically a warp color order. However, its format is different from stripe sequences common in handweaving. Tartan setts are given as a single repeat of the colors with "pivot points" at the ends. To read a tartan sett, begin at one end and read to the other. At the end of the sequence, reverse and read back to the beginning. In the tartan setts below, the pivot points are indicated in boldface type. To get you started reading tartan setts, the setts for the three tartans below are given both as a sett and as a color order of the sort used by Handwoven. See if you can see how to get from one to the other.

The Oklahoma State University Tartan



The OSU tartan uses four colors: Orange (O), Black (K), White (W), and Grey (N)

OSU Tartan Sett

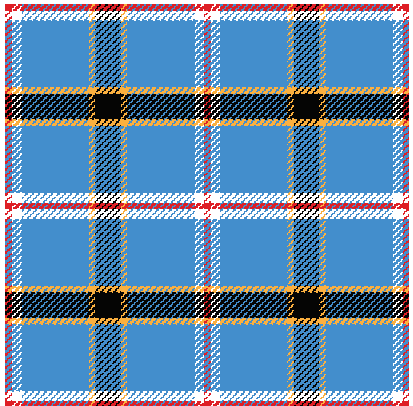
O K W N
80 52 7 12

OSU Tartan Warp Color Order

Repeat		
80		80 Orange (O)
52	52	Black (K)
7	7	White (W)
12		Grey (N)

It should be noted that the OSU tartan has been registered as a corporate tartan and is a trademark of OSU. While it is probably okay to weave this tartan for your personal use or as a gift, if you want to weave things to sell using it, you need permission and a license from OSU.

The Oklahoma Tartan

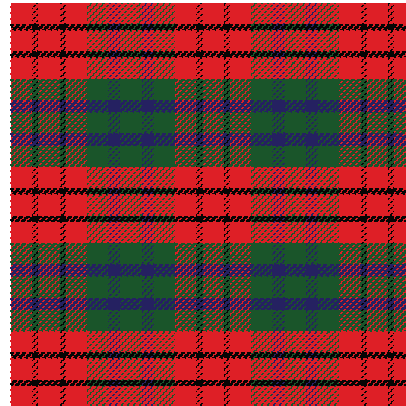


Colors:
Red (R)
White (W)
Blue (BL)
Gold (DY)
Black (K)

R W BL DY K
8 12 84 8 32

Repeat		
8	8	Red (R)
12	12	White (W)
84	84	Blue (BL)
8	8	Gold (DY)
32		Black (K)

The Tulsa Tartan



The pivot points in this sett are the red and green stripes between the two black and blue contrasting stripes. As a result, this sett requires additional stripes to balance correctly and does not lend itself to typical tartan sett conventions.

Colors:
Red (R)
Black (K)
Dark Green (DG)
Dark Blue (DB)

R K R DG DB DG
28 6 28 28 16 28

Repeat					
28	28	28	28	28	28
6	6			6	6
		28	28	28	
		16	16		

Red (R)
Black (K)
Dark Green (DG)
Dark Blue (DB)

With 210 threads in a repeat for OSU's tartan, 248 for Oklahoma's, and 212 for Tulsa's, these patterns get really big really fast unless they are woven in fine threads. Traditionally, however, setts record the *proportion* of each colored stripe rather than absolute numbers of threads, so it is perfectly okay to reduce the number of threads by half, as long as the smallest stripe contains at least 4 threads (the minimum number in 2/2 twill that will appear as a solid—rather than dotted—line). To halve the sett of the OSU tartan for example, the white stripes could be reduced from 7 threads to 4.