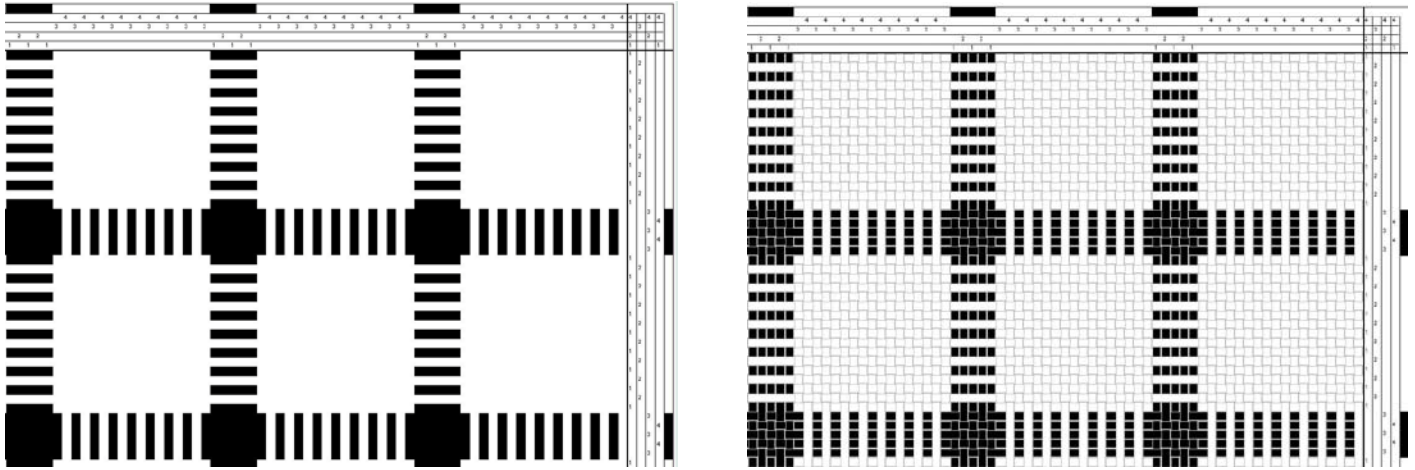


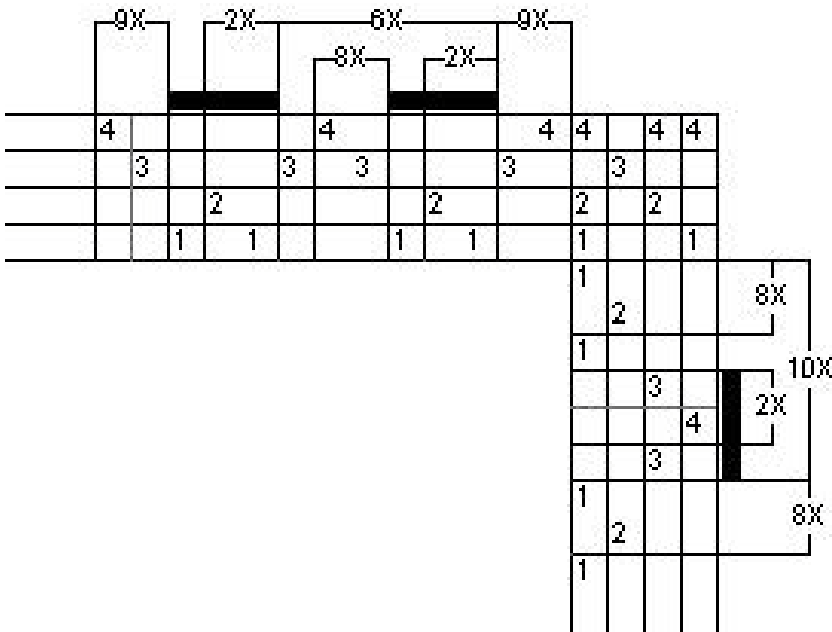
Deflected Doubleweave: The Magic of Three Elements
 Ruth Morrison, Lois Green, Donna Hilton & Lyn Lucas
 Tulsa Handweavers Guild, March 2, 2013

What are those three magical elements? Warp floats, weft floats & plain weave.

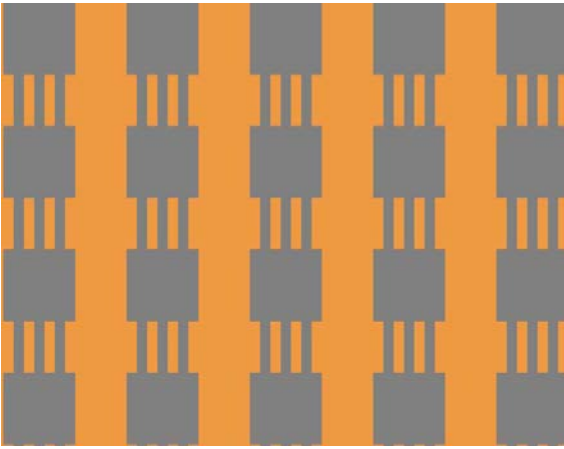
4-Shaft threading, featured in *Handwoven* January/February 2007, first the color/draw down view and then the interlacement view:



The draft used to thread and weave this simple 4-shaft deflected doubleweave fabric:

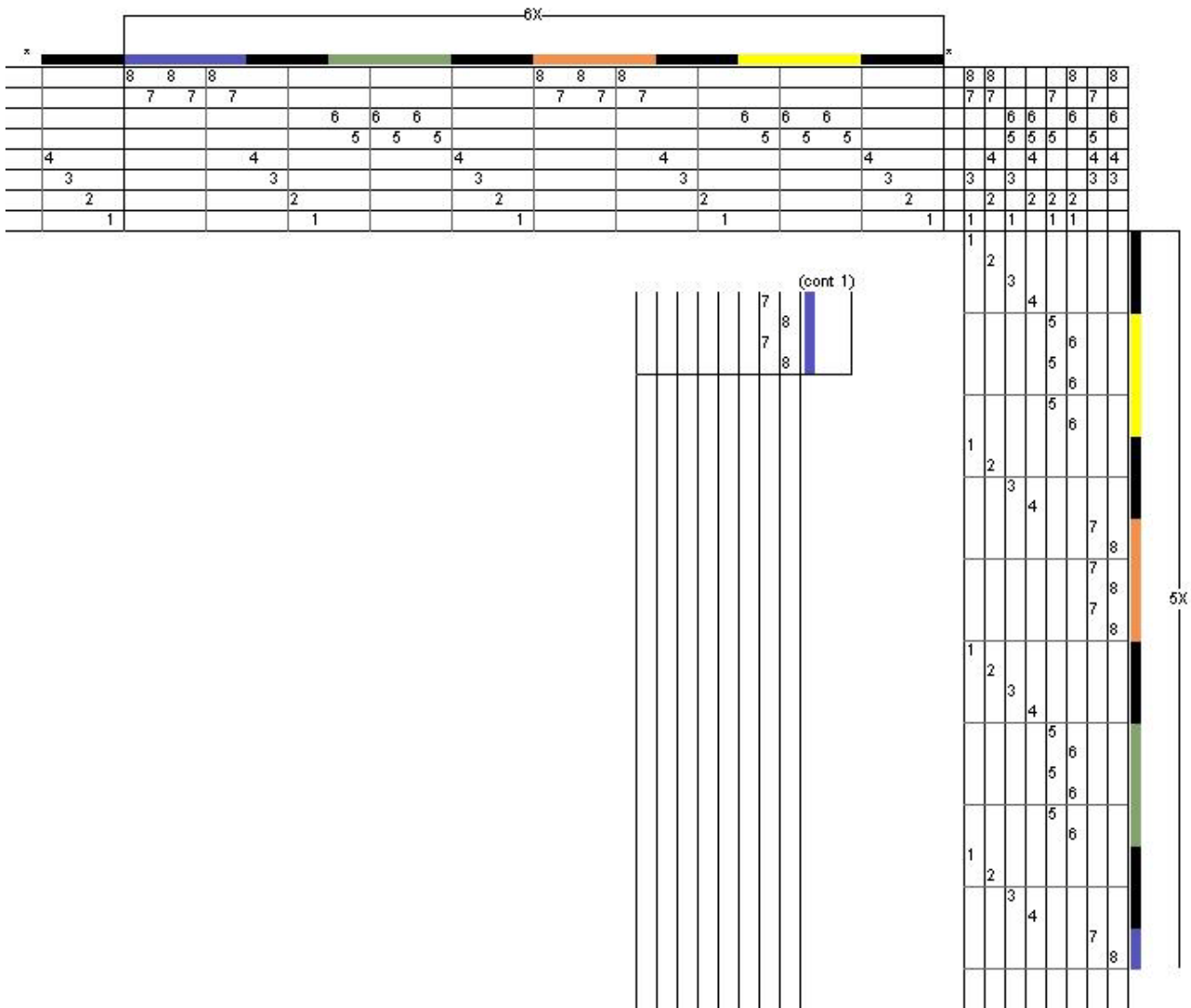
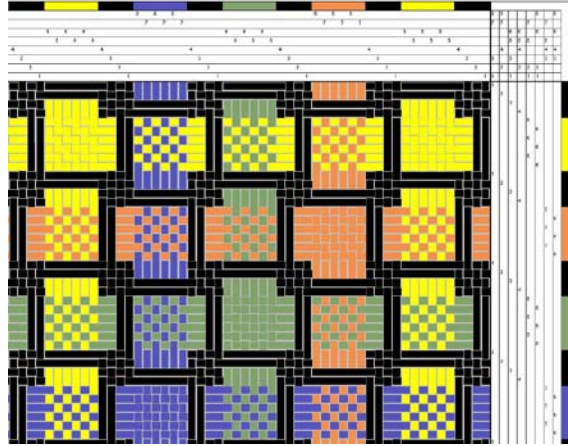
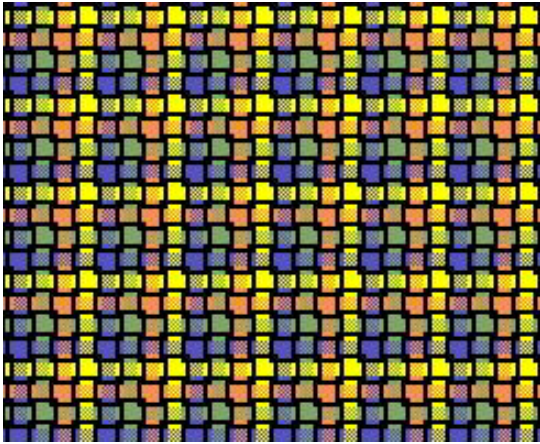


A simple 4-Shaft threading: color/draw down view, interlacement view, and draft:



4	4	4				4	4	4				4	4		4	
	3	3					3	3					3	3		3
			2	2	2				2	2	2					2
			1	1	1	1				1	1	1	1			1
										1						
										2						
										1						
											2					
											1					
												2				
												1				
													2			
													1			
														2		
														1		
															2	
															1	
																2
																1

Sample woven by Ruth Morrison using Willamette 2/20 wool sett at 30 epi. Color/draw down view, interlacement view and draft:



Sample woven by Lyn Lucas, wool/silk noil 2400 yds/ lb, sett 24 epi. Front view and back view of fabric. Tromp'd as Writ.

